



WATERPROOF WALL SYSTEM

RANGE
2022-2023

ROCKO
Tiles by Kronospan



Table of Content

• Product portfolio	3
• Characteristics	5
• Rocko Tiles range	10
• Accessories	19
• Installation	20
• Investment projects	22
• Marketing materials	24

SPC Product Portfolio

- our SPC range is completely produced and shipped from Europe
- we keep our products in express program, which means they are always available on our stock
- we assure reliable supply chain and short lead time
- possible mix shipments with other Kronospan products like laminate flooring, OSB or plywood



SPC Product Portfolio

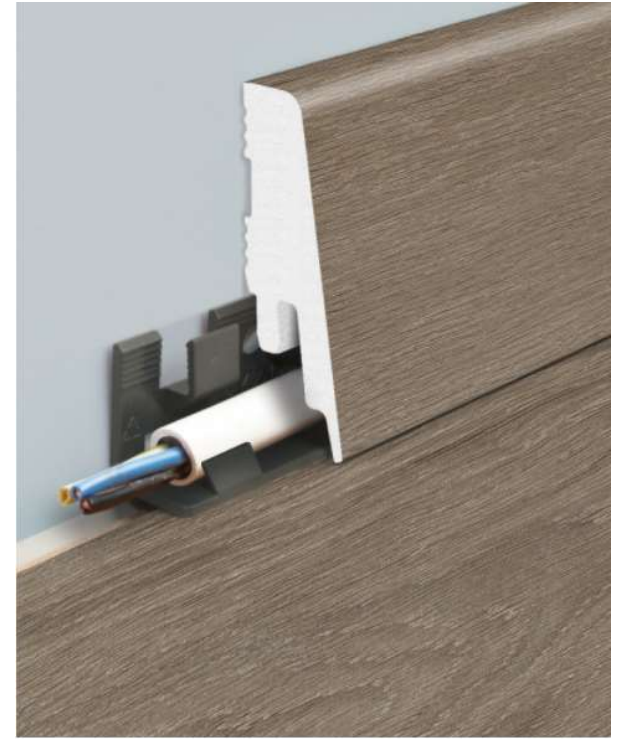
FLOORING



WALL TILES



SKIRTING BOARDS



PRODUCT CHARACTERISTICS

NEW GENERATION WATERPROOF WALL SYSTEM

Product Characteristics

SPC decorative waterproof tiles are a new development among finishing and decorative materials in Kronospan range. It is ideal for commercial and individual projects, both for new investments and renovations.

- Waterproof
- SPC based – over 70% of marble content
- Digital print design with UV coated surface
- Extraordinary large format 2800 x 1230 mm
- Easy to clean; hygienic
- Slim slabs, light weight
- Easy to work with, handle and install
- Applicable on all major construction technologies
- Can be cut, shaped, drilled
- Perfect for different subsurfaces: *concrete, tiles, gypsum plaster, plywood, osb*



Product Characteristics

WATERPROOF



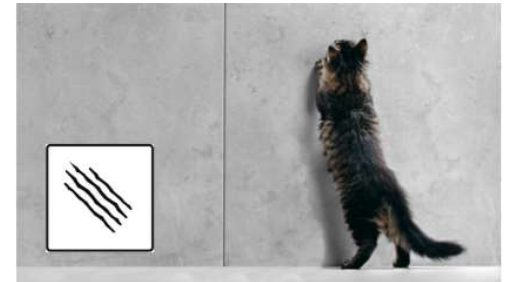
STABLE DIMENSIONS



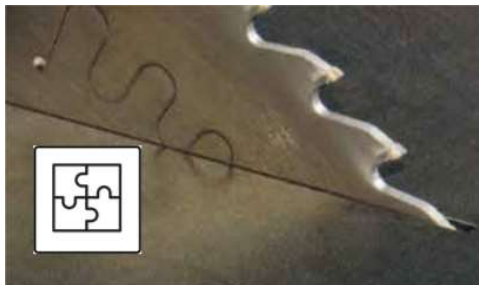
STAIN PROOF & EASY CLEAN



SCRATCH RESISTANT



FAST, CLEAN, EASY INSTALLATION



FIRE RESISTANT



SOFT TOUCH



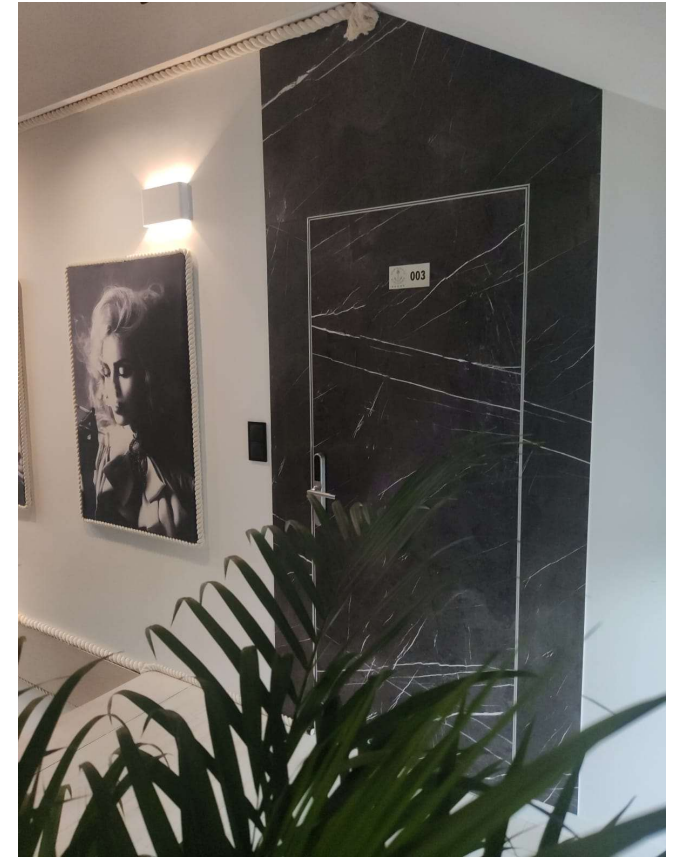
Product Characteristics

EXTRAORDINARY LARGE FORMAT

- Luxury design
- Contemporary look
- Fast installation
- Minimal number of joints
- Covers standard european wall height with no additional joint
- Hygienic and easy to clean



280 x 123 cm



Product Characteristics

FLANDERS OAK FN



PEETAH PT



ROCKO TILES

PRODUCT RANGE 2022

Rocko Tiles Product Range



STONES

2800 x 1230 x 4 mm



ROCKO
Tiles by Kronospan



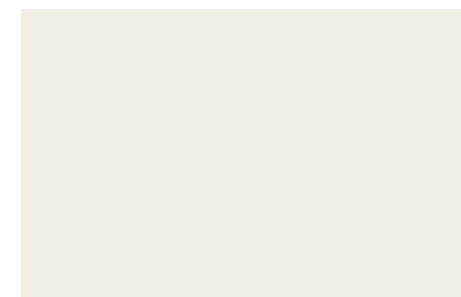
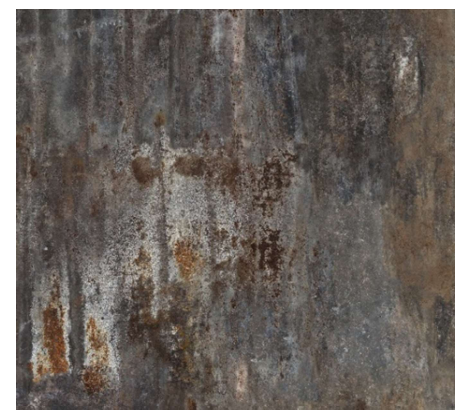
BOSCO

2800 x 1230 x 4 mm



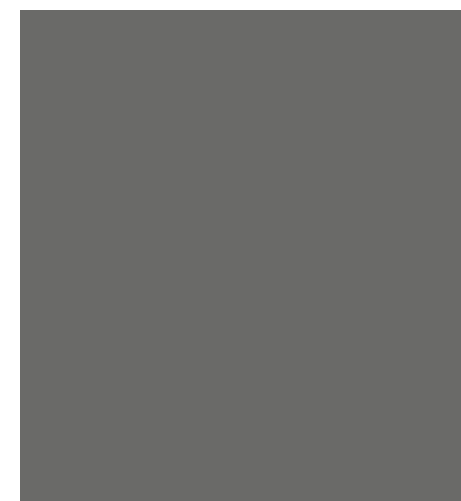
METAL

2800 x 1230 x 4 mm



COLOR

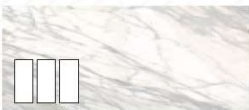
2800 x 1230 x 4 mm



Rocko Tiles Product Range Overview

STONES

2800 x 1230 x 4 mm



R102
Venato Nature, PT



R101
Statuario, PT



K349
Silk Flow, PT



R119
Crema Valpolicella, PT



R130
Greige Babylon, PT



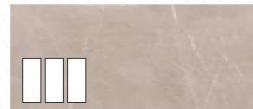
R103
Calacatta, PT



R109
Concrete, PT



R115
Brooklyn Grey, PT



K024
Beige Pietra Marble, PT



R104
Rainforest Brown, PT



K026
Grey Pietra Marble, PT



R118
Ardesia, PT



R106
Marquina, PT

METAL

2800 x 1230 x 4 mm



K104
Rusty Cooper, PT



R105
Copper Lamiera, PT



R120
Native Steel, PT



R121
Bohemian Loft, PT

BOSCO

2800 x 1230 x 4 mm



K365
Coast Evoke Oak, FN



R099
Vintage Herringbone, PT



R122
Yacht Wood, FN

COLOR

2800 x 1230 x 4 mm



0110
White, PT



0564
Almond, PT



5981
Cashmere, PT



0171
Slate Grey, PT

Rocko Tiles Product Range

STONES

2800 x 1230 x 4 mm



R101 Statuario PT



R102 Venato Nature PT



R119 Crema Valpolicella PT



K349 Silk Flow PT



R103 Calacatta PT

Rocko Tiles Product Range

STONES

2800 x 1230 x 4 mm



R130 Greige Babylon PT



R109 Concrete PT



R115 Brooklyn Grey PT



K024 Beige Pietra Marble PT



K026 Grey Pietra Marble PT

Rocko Tiles Product Range

STONES

2800 x 1230 x 4 mm



R104 Rainforest Brown PT



R118 Ardesia PT



R106 Marquina PT



Rocko Tiles Product Range

METAL

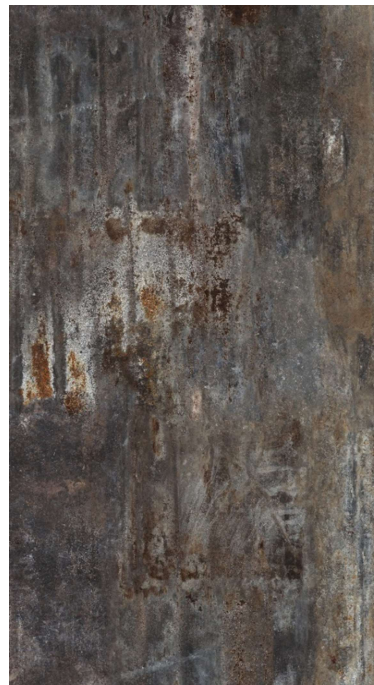
2800 x 1230 x 4 mm



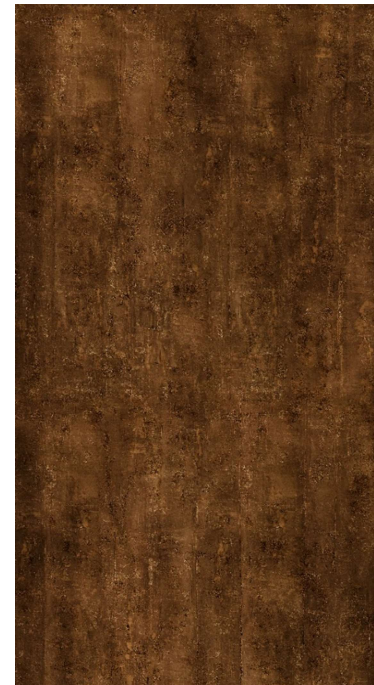
R104 Rusty Copper PT



R105 Copper Lamiera PT



R120 Native Steel PT



R121 Bohemian Loft PT

Rocko Tiles Product Range

BOSCO

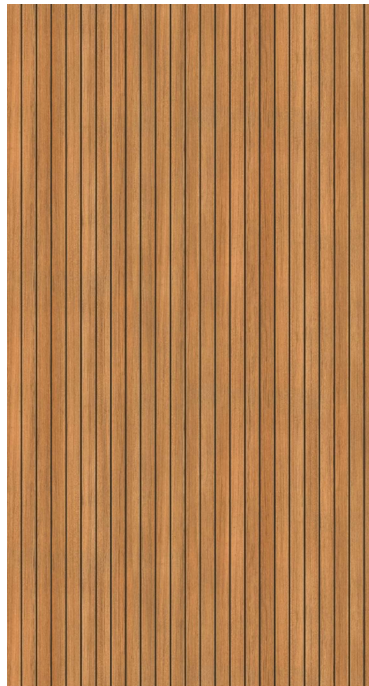
2800 x 1230 x 4 mm



K365 Coast Evoke Oak FN



R099 Vintage Herringbone PT



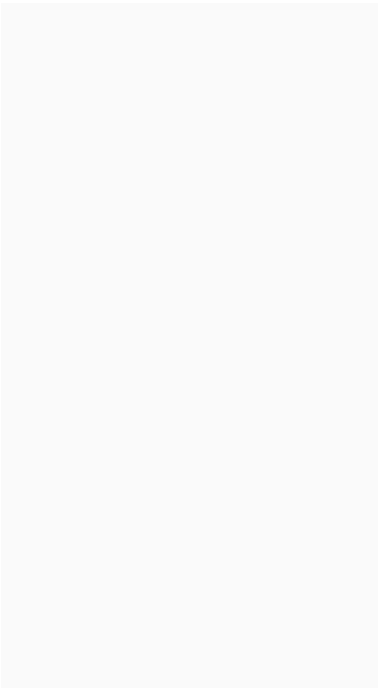
R122 Yacht Wood FN



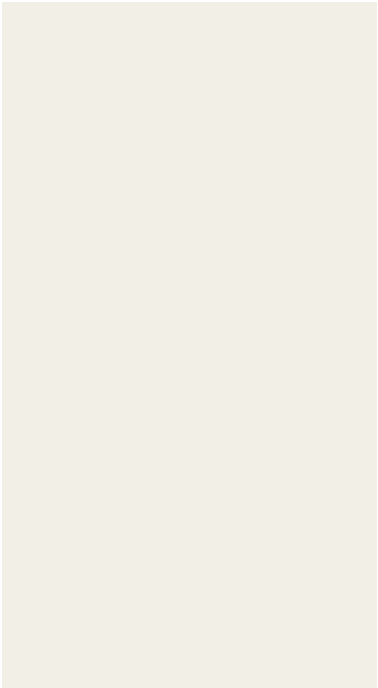
Rocko Tiles Product Range

COLOR

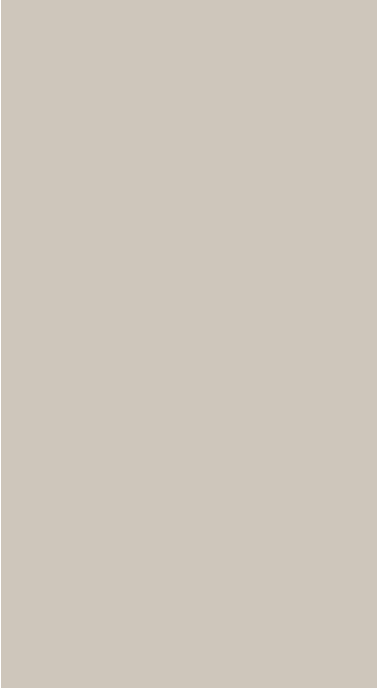
2800 x 1230 x 4 mm



110 White PT



564 Almond PT

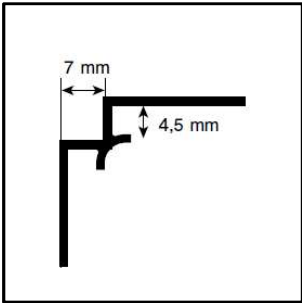


5981 Cashmere PT

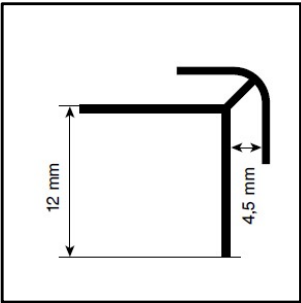


171 Slate Grey PT

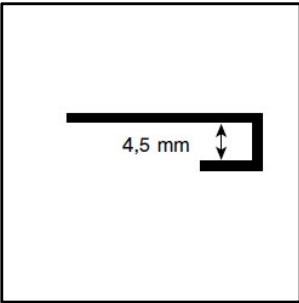
Accessories



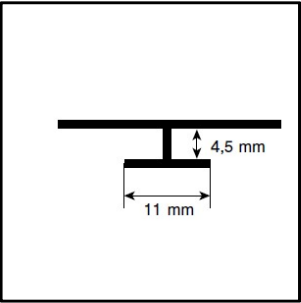
Internal corner profile 2.800 mm



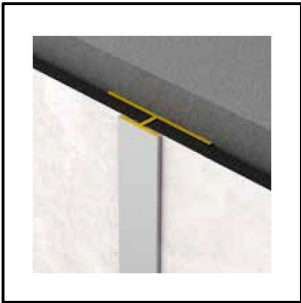
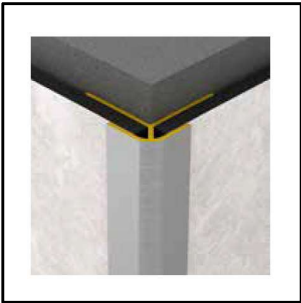
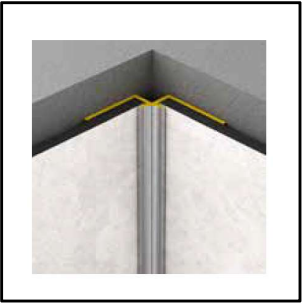
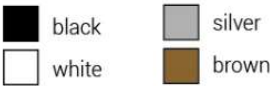
External corner profile 2.800 mm



C-profile 2.800 mm



T-profile 2.800 mm



Adhesive 290 ml

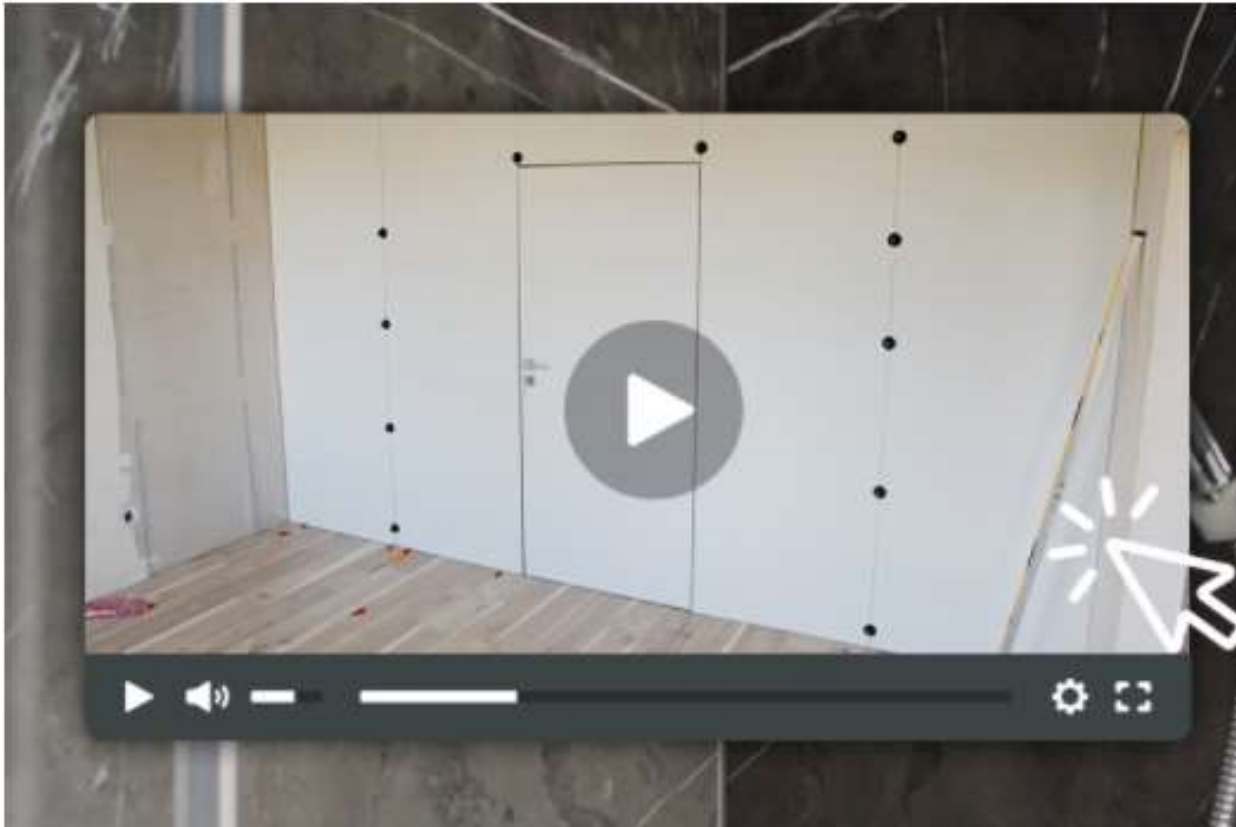


Cleaning Liquid

INSTALLATION

NEW GENERATION WATERPROOF WALL SYSTEM

Rocko Tiles Installation



<https://www.rocko-vinyl.com/assembly-wall-tiles>

INVESTMENT PROJECTS

NEW GENERATION WATERPROOF WALL SYSTEM

Investment Projects



SUSHI BAR MOLDOVA



HOTEL OŁAWA



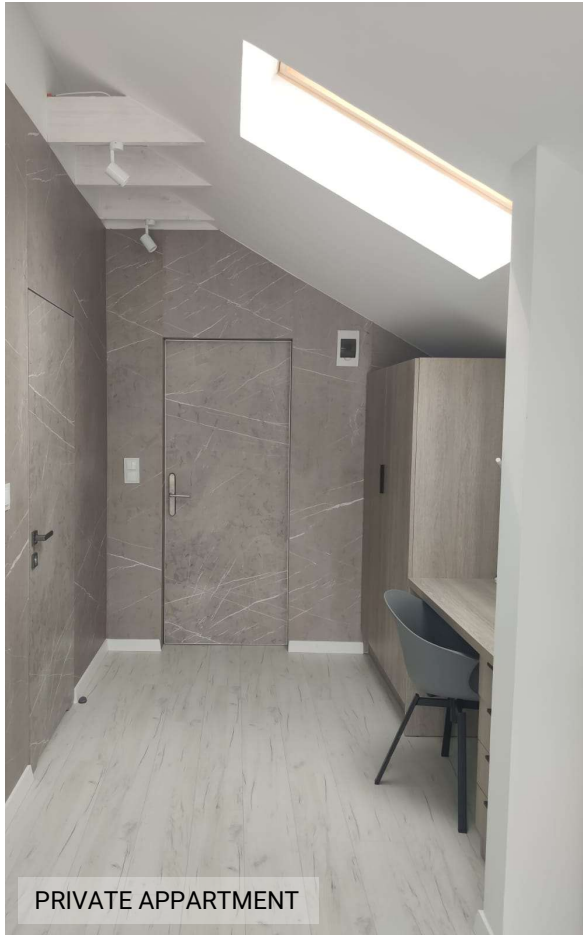
HOTEL OŁAWA



HOTEL OŁAWA



HOTEL OŁAWA



PRIVATE APPARTMENT

MARKETING MATERIALS

NEW GENERATION WATERPROOF WALL SYSTEM

Marketing Materials

CPN:
MM-ROCKO-TILES-POS-1

DESCRIPTIION:
metal frame rack, 12 x
frames for samples,
samples incl.

DIMENSIONS:
1300x1730x650mm



CPN:
MM-ROCKO-TILES-SWATCH

DESCRIPTIION:
cardboard box, magnet
fastened, samples included

DIMENSIONS:
310x120x100mm



CPN:
MM-ROCKO-TILES-POS-SH

DESCRIPTIION:
shower POS

DIMENSIONS:
1200x2000x1200mm



CPN:
MM-ROCKO-TILES-
PROFILES

DESCRIPTIION:
profile swatch

DIMENSIONS:
100 mm



Marketing Materials

CPN:
MM-ROCKO-TILES-
CATALOGUE

DESCRIPTION:
68 pages; available in digital
and printed version

DIMENSIONS:
A4



CPN:
MM-ROCKO-TILES-USER



DESCRIPTION:
available only in digital
version

DIMENSIONS:
A4



Contact

Any questions? Please contact:

 Maja Zastawna	mob. +48 607 910 934	m.zastawna@kronospan.pl
 Krzysztof Muszynski	mob. +48 607 910 064	k.muszynski@kronospan.pl